

Year of Mercy Hymn — Flute

Paul Inwood

INTRO

The Intro section consists of three staves of music. The first staff begins with a treble clef, a key signature of two flats (B-flat and E-flat), and a 4/4 time signature. The melody starts with a quarter rest, followed by eighth and quarter notes. The second staff continues the melody with eighth and quarter notes. The third staff concludes the intro with a quarter note and a whole note.

ANTIFONA 1 VERSE 1

ANTIFONA 2

4

The first staff of Antifona 1 Verse 1 begins with a 4-measure rest, indicated by a '4' above the staff. The melody then begins with eighth and quarter notes. The second staff continues the melody with eighth and quarter notes.

VERSE 2

2

VERSE 2 consists of three staves of music. The first staff starts with a 2/4 time signature, followed by a 4/4 time signature, and ends with a 2/4 time signature. A '2' is placed above the second measure of the first staff. The second staff continues the melody in 4/4 time. The third staff concludes the verse with eighth and quarter notes.

ANTIFONA 3

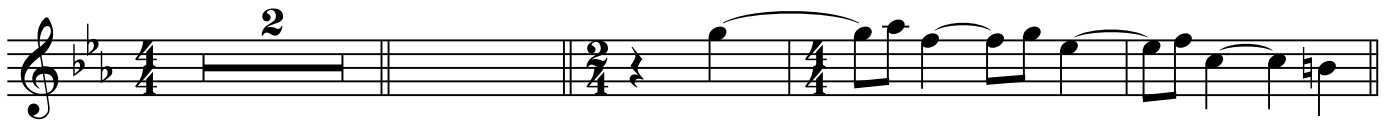
ANTIFONA 3 consists of one staff of music. The melody is composed of eighth and quarter notes, with some notes beamed together.

VERSE 3

2

VERSE 3 consists of two staves of music. The first staff starts with a 2/4 time signature, followed by a 4/4 time signature, and ends with a 2/4 time signature. A '2' is placed above the second measure of the first staff. The second staff continues the melody in 4/4 time.

Year of Mercy Hymn Flute page 2



ANTIFONA 4



VERSE 4



ANTIFONA 5

